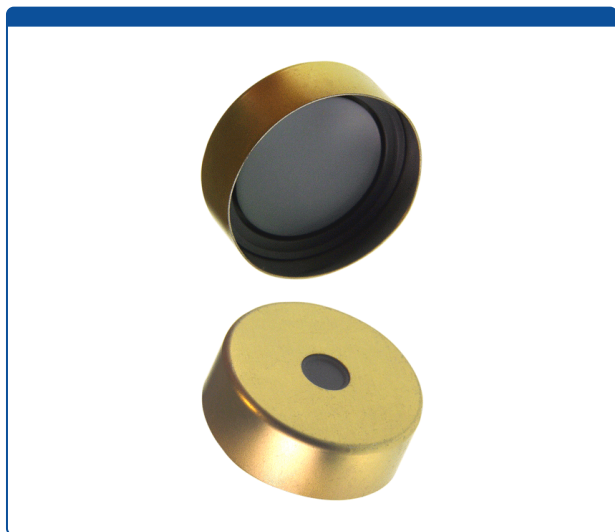


Catalog Number

95025-03-3D

Caps, Headspace, Crimp Top, with Grey Butyl Rubber / Partially Laminated PTFE Septa, fitted in Steel, Gold Caps with 5mm center holes. Pharma-Fix. For use with 20mm Crimp Top Headspace Vials.



Additional Info

Shaped, Butyl Rubber with Durometer of 50 Shore A, (hardness) and 3.0mm thick. Partially laminated with PTFE only on the light grey side of the Septa that faces the sample area. Dark Butyl Rubber facing the glass vial provides a very good seal, due to its elasticity. Combining inertness of PTFE and elasticity of Butyl Rubber. This type of Septa is commonly known as Pharma-Fix™ and is temperature resistant from -40° to 120°C.

Recommended for CTC™ and other autosamplers.

MicroSolv Technology Corporation

9158 Industrial Blvd. NE, Leland, NC 28451

tel. (732) 380-8900, fax (910) 769-9435

Email: customers@mtc-usa.com

Website: www.mtc-usa.com

Price

\$125.78

Printed On 2024/05/19