

Column End Plugs

Column end plugs are used to prevent HPLC columns from drying out when not in use. Made of hard nylon, these end stoppers are available in packs of 10 and in different colours.

Figure 47.



Column End Plugs

Column Couplers

Column couplers are used to connect two HPLC columns in series.

Figure 48.



Column Couplers

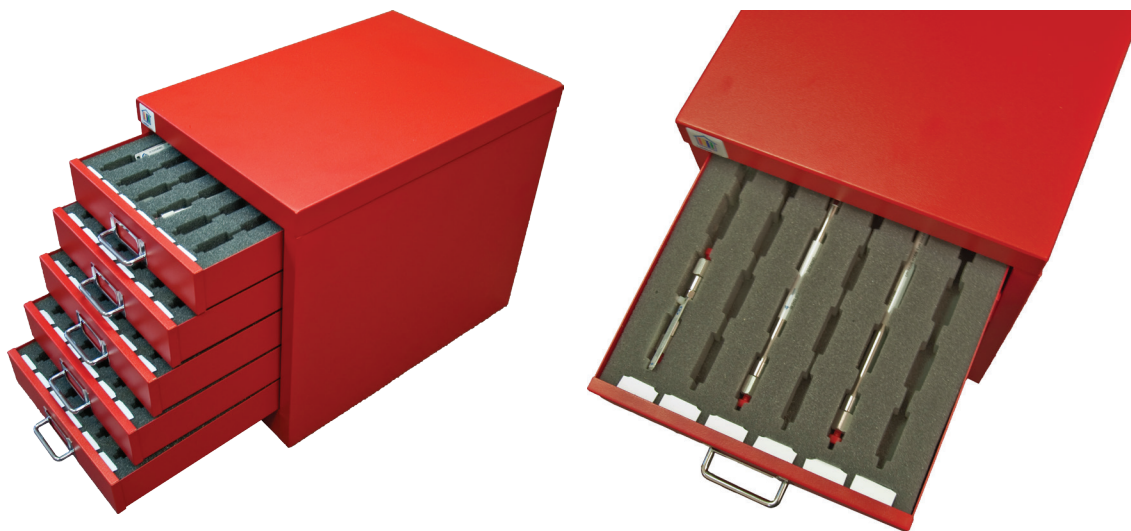
Catalog Numbers	Description
49027-01B	End plugs for HPLC columns. Nylon 10-32 Thread. Blue. 10/Pack.
49027-06K	End plugs for HPLC columns. Nylon 10-32 Thread. Black. 10/Pack.
49027-04W	End plugs for HPLC columns. Nylon 10-32 Thread. White. 10/Pack.
47450-06	Column coupler, for use with 1.0mm to 21.2mm i.d. Hichrom hardware columns.

Column Storage Storage Cabinet

The Column Storage Cabinet storage system is simple and compact and prevents HPLC columns from getting lost or damaged. It also keeps columns organized for quick retrieval. The column storage cabinet is a steel benchtop unit that can hold up to 30 columns of up to 30cm in length. The five drawer units contain foam cut-outs to accommodate 5, 12.5, 15 or 30cm length columns. The units are stackable.

Catalog Numbers	Description
50100-30	Storage cabinet for HPLC columns. Holds up to 30 columns that are up to 30cm long and up to 10cm OD. Red color with 5 drawers with foam cut outs to hold columns, 13" x 16 x 18" (WxHxD). Supplied with rubber feet. 26lbs. 1 each.

Figure 49.



Store columns not in use