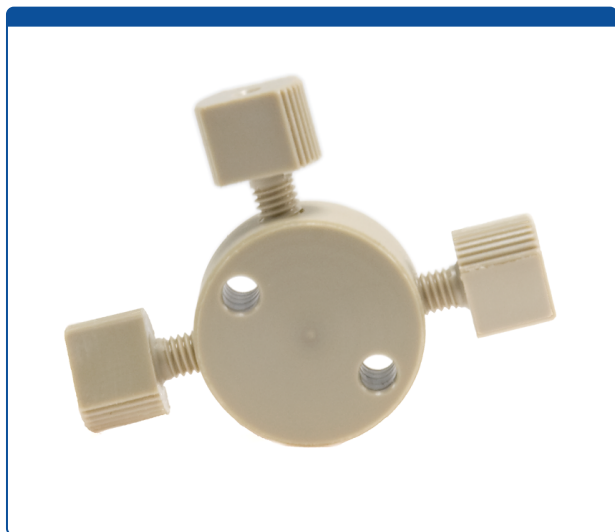


## Catalog Number

49302-CX-11

**Union, Connector Kit, Cross**, high pressure, 0.30 mm / 0.012 inch through hole with 10-32 screw threads. PEEK, round with an internal "X" flow pattern. Use with 1/16 inch tubing. ARE-Applied Research brand.



### Additional Info

This low dead volume, "Union" is used to connect PEEK or stainless steel tubing with the same connectors on both ends in the high pressures zones of HPLC systems. A "Cross (X)" internal flow pattern is often used to split flow into two or three directions or to combine two or three streams into one.

Supplied with four finger tighten connectors (nuts) [47301-05](#).

### MicroSolv Technology Corporation

9158 Industrial Blvd. NE, Leland, NC 28451

tel. (732) 380-8900, fax (910) 769-9435

Email: [customers@mtc-usa.com](mailto:customers@mtc-usa.com)

Website: [www.mtc-usa.com](http://www.mtc-usa.com)

Printed On 2024/05/20